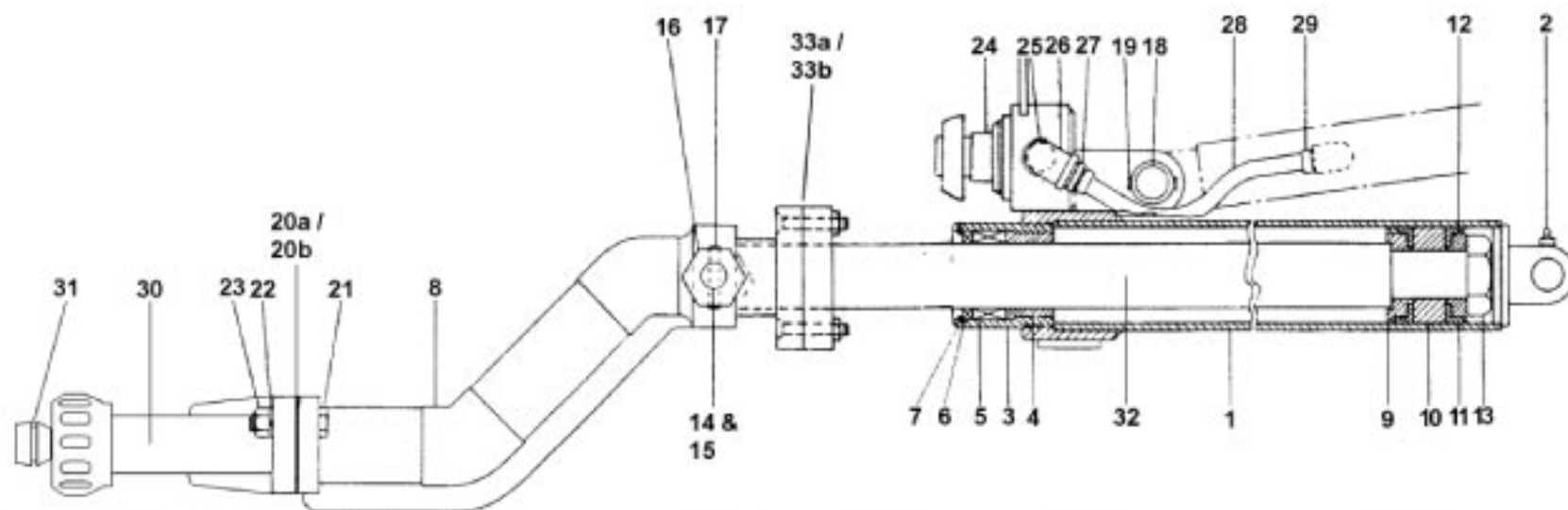


Long Tom

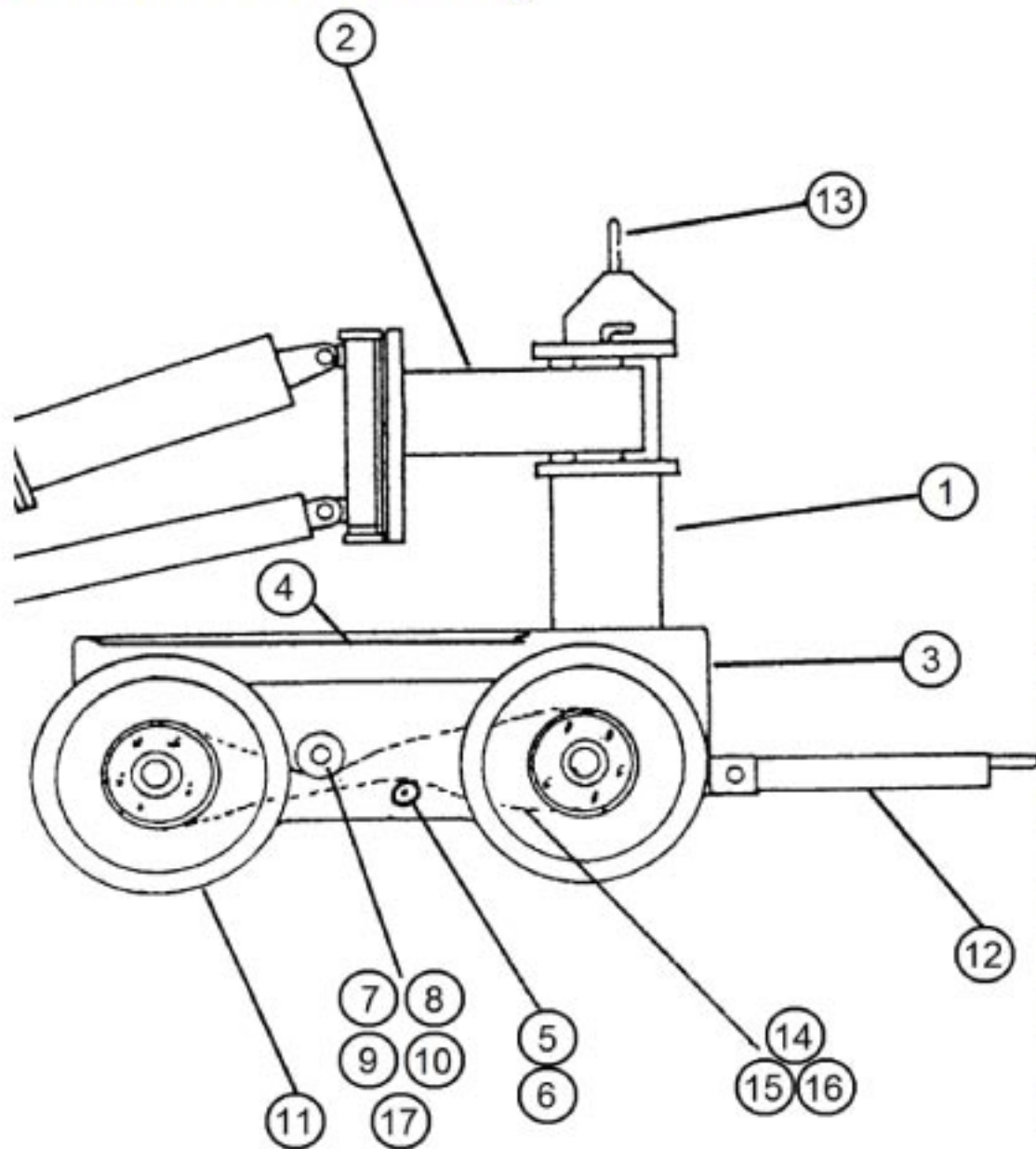
W-2619 Leg Cylinder Assembly



Ref. No.	Part No.	Description	Qty
1	X-1656	Leg Cylinder, Bare	1
2	1610	Alemite Fitting	1
3	Y-1252	Packing Cap	1
4	Y-271	Piston Rod Bearing	1
5	Y-274	Set Rod Packing (Molythane)	1
6	275-4HD2	Rod Wiper	1
7	5000-275	Retaining Ring	1
8	WB-2501-2	Gooseneck	1
9	W-2590	Inlet Cup Follower, 12" Long	1
9*	Y-1237	OPTIONAL: Inlet Cup Follower, 13/16" Long	1
10	Y-1238	Piston Head (Brass Guide)	1
11	Y-1241	Cup Packing (Molythane)	2
12	Y-1236	Cup Follower	1
13	Y-1250	Rod Nut	1
14	Y-1745	Reverse Valve	1
15	6227-11	*O* Ring (Feed / Reversing Valve)	3
16	Y-2030-A	Valve Handle - short, no pin	1
16	Y-2030-B	Valve Handle - long, w / pin	1
16	Y-2030-C	Valve Handle - long, w / pin & extension handle	1

Ref. No.	Part No.	Description	Qty
17	59-048-250-1750	Roll Pin	2
18	Y-1647	Leg Lift Pin	1
19	59-077-375-1500	Roll Pin	1
20a	Y-1384	Gasket (or use 20b)*	1
20b	YJ-230	O-ring (or use 20a)*	1
21	-	HHCS 1/2" - 13 NC x 2-1/4"	4
22	-	1/2" Mod. Pos. Lockwasher	4
23	-	Hex. Nut Reg SF 1/2" - 13 NC	4
24	J-213AC	Self-Relieving Pressure Regulator	1
25	-	3/8" Close Nipple	2
26	-	3/8" - 90° Elbow	2
27	-	3/8" to 1/4" Hex. Bushing	2
28	1525-4	Aeroquip Hose, 7 1/4" Long	2
29	4738-4-4B	Aeroquip Fitting	4
30	C-109HD	Heavy Duty Secan Drill Adapter	1
31	YJ-215	*O* Ring	1
32	Y-1730	Piston Rod (Bare)	1
33a	Y-269	Packing Cap Gasket (or use 33b)*	1
33b	2813002	*O* Ring (or use 33a)*	1

Long Tom Carrier Assembly

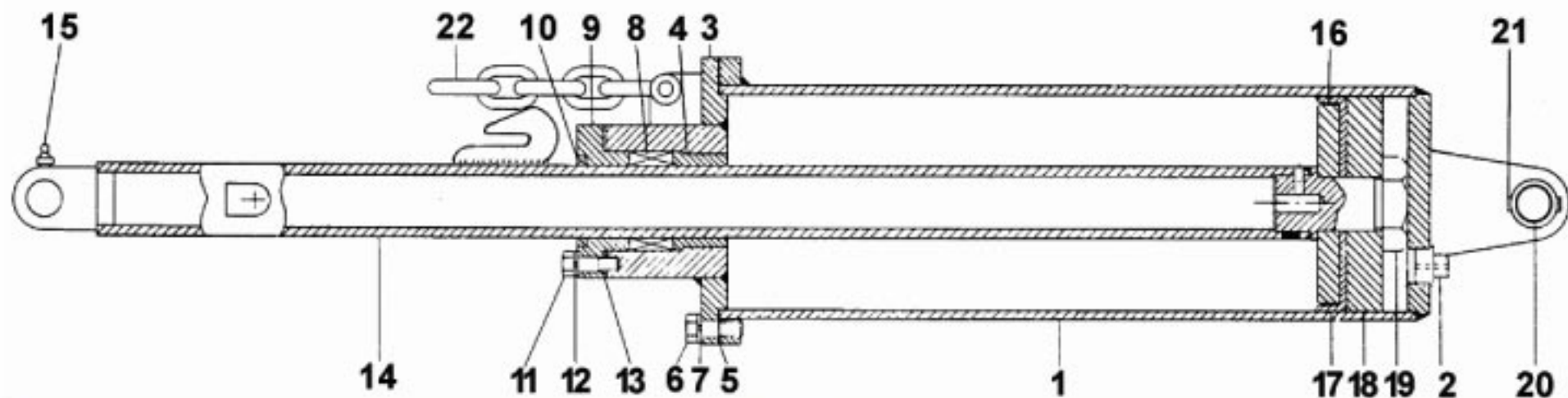


Your unit(s) may appear differently than depicted here.

Ref. No.	Part No.	Description	Qty
1	J-8240	Turret Pedestal Weldment	1
2	J-8241	Boom Mount – Hinge Weldment	2
3		Main Frame Weldment	1
4	J-7804	Main Frame Hatch	2
5	J-7844	Idler Sprocket c/w Bushing	4
6	J-7900	Idler Shafts	4
7	J-8202	Drive Sprocket, Slotted	2
8	J-7858	Drive Sprocket Cap, Keyed	2
9	J-7824	Drive Gear Adapter Shaft	2
10	J-7724	Adapter Shaft Spacer	2
11	JJ600X9	Tire & Rim Assembly	4
12	J-7194	Operator's Platform	1
13	J 3/4-4	Trammings Valves	2
14	Y-8040	Chain Assembly	2
15	Y-8040-1	Master Link	2
16	Y-8040-2	Half Link	2
17	NAF212-39	Flange Bearing	2

Long Tom

W-1672 Balance Cylinder Assembly

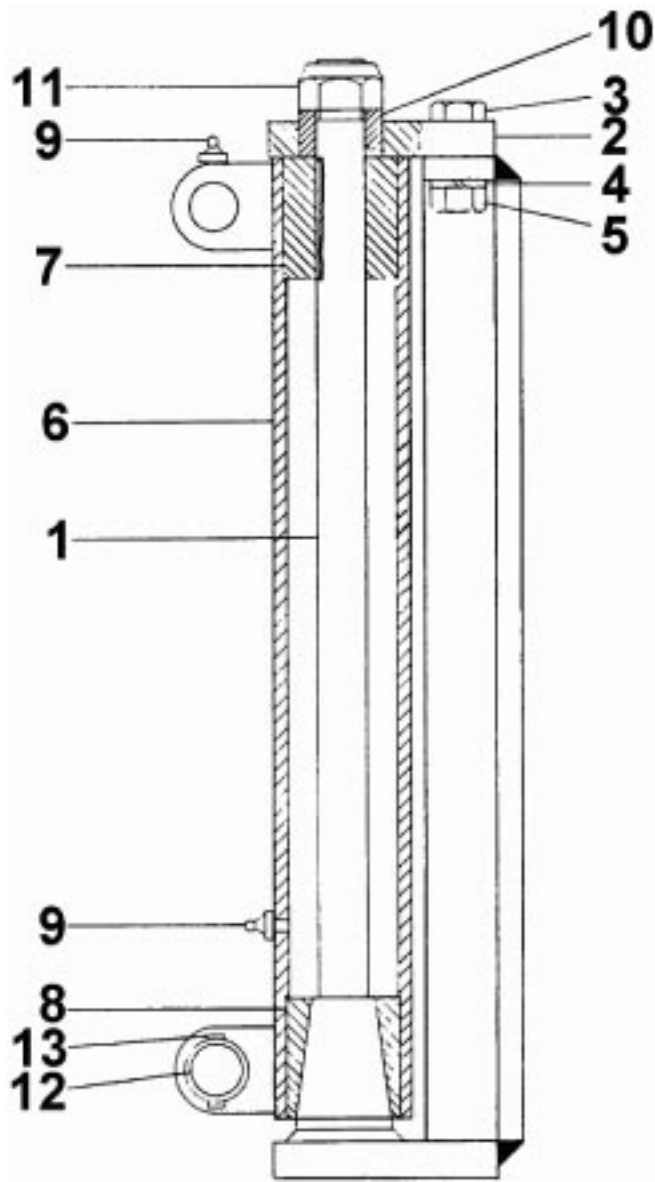


Ref. No.	Part No.	Description	Qty
1	X-1642	Balance Cylinder, Bare	1
2	Y-1263	Pipe Plug	1
3	X-1671	Cylinder Head	1
4	Y-271	Piston Rod Bearing	1
5	Y-272	Cylinder Head Gasket	1
6	-	HHCS 1/2" - 13 NC x 1-1/4"	8
7	-	1/2" Med. Pos. Lockwasher	8
8	Y-274	Set Rod Packing (Molythane)	1
9	Y-268	Packing Cap	1
10	250-G2	Rod Wiper	1
11	-	HHCS 7/16" - 14 NC x 1-1/4"	4

Ref. No.	Part No.	Description	Qty
12	-	7/16" Med. Pos. Lockwasher	4
13	Y-269	Packing Cap Gasket	1
14	Y-1257	Piston Rod	1
15	1610	Alemite Fitting	1
16	Y-265	Cup Follower	1
17	Y-266	Cup Packing (Molythane)	1
18	Y-267	Piston Head	1
19	Y-1250	Rod Nut	1
20	Y-1646	Pedestal Pin	1
21	59-077-375-1500	Roll Pin	1
22	-	Drop Lock Chain	1

Long Tom

X-1674 Mounting Bracket Assembly



<i>Ref. No.</i>	<i>Part No.</i>	<i>Description</i>	<i>Qty</i>
1	W-1511	Mounting Plate, Bare	1
2	Y-1631	Top Bearing Plate	1
3	-	HHCS 5/8" - 11 NC x 2"	2
4	-	5/8" Med. Pos. Lockwasher	2
5	-	Hex. Nut Reg. SF 5/8" - 11 NC	2
6	X-1637	Taper Lock Pedestal, Bare	1
7	Y-1282	Top Bushing	1
8	Y-1283	Taper Bushing	1
9	1610	Alemite Fitting	2
10	Y-1280	Pedestal Pressure Ring	1
11	49TU-168	Nylon Insert Nut	1
12	Y-1647	Pedestal Leg Pin	1
13	59-077-375-1500	Roll Pin 3/8 x 1-1/2	1